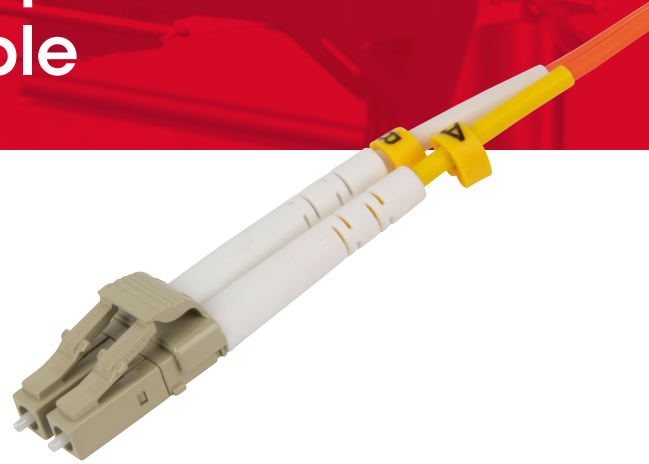


1m LC to LC Multimode Duplex OM2 LSZH Fibre Optic Cable

Introducing the LC to LC Multimode Duplex OM2 LSZH Fibre Optic Cable, now available in a versatile 1-meter length. Elevate your networking solutions with this high-quality fibre optic lead, designed for exceptional data transmission and safety.



Features

- High-grade 50µm/125µm multimode fibres ensure optimal data transmission for high-density applications.
- Low Smoke Zero Halogen (LSZH) material minimises toxic emissions, providing a safer cabling solution for public spaces and health facilities.
- LC connectors ensure secure and high-precision connections critical for maintaining data integrity.
- OM2 fibre rating ensures compatibility with a wide range of network hardware, facilitating smooth integration into existing infrastructure.

Product Specifications	
Connector Type	LC to LC
Fibre Type	OM2
Ferrule Material	Ceramic
Cable Construction	Tight-buffered
Cable Diameter	2.8mm nominal per unit
Core / Cladding Diameter	50µm / 125µm
Wavelength	Optimised for 850nm VCSEL light sources
Bandwidth	500MHz*km (overfilled launch) at 850nm
Transmission Speed	Up to 10Gbps at 300m
Maximum Attenuation	3.0dB/km at 850nm; 1.0dB/km at 1300nm
Maximum Distance	Up to 1Gbps at 600m; Up to 10Gbps at 150m
Polarity	Type B (cross-over)
Jacket Material	Low Smoke Zero Halogen (LSZH)
Fire Rating	IEC 60332-1, IEC 60332-3, OFNR or OFNP
Standards Compliance	TIA/EIA-568-C.3, ISO/IEC 11801, IEC 61754-4, IEC 60793-2-10
Minimum Bend Radius	15 times the outer diameter
Pulling Tension	100N max.

Numeric Aperture	0.200 nominal
Strain Relief	100-kpsi min.
Crush Resistance	750N/100mm
Impact Resistance	1.2Nm (impacts)
Flexibility	2000 cycles
Cable Length	1 meter
Operating Temperature	-20°C to +70°C
Installation Temperature	0°C to +50°C

Product Information	
Part Number	60015PI
EAN	5050171087879
Units per Pack	1
Packaging Size	21.5 x 17 x 0.5cm
Finished Packaging Weight	18g
Outer Box Qty	-
Outer Size	-
Outer Gross Weight	-
Outer Net Weight	-